

CERTIFIED LAND CORNER RECORDATION

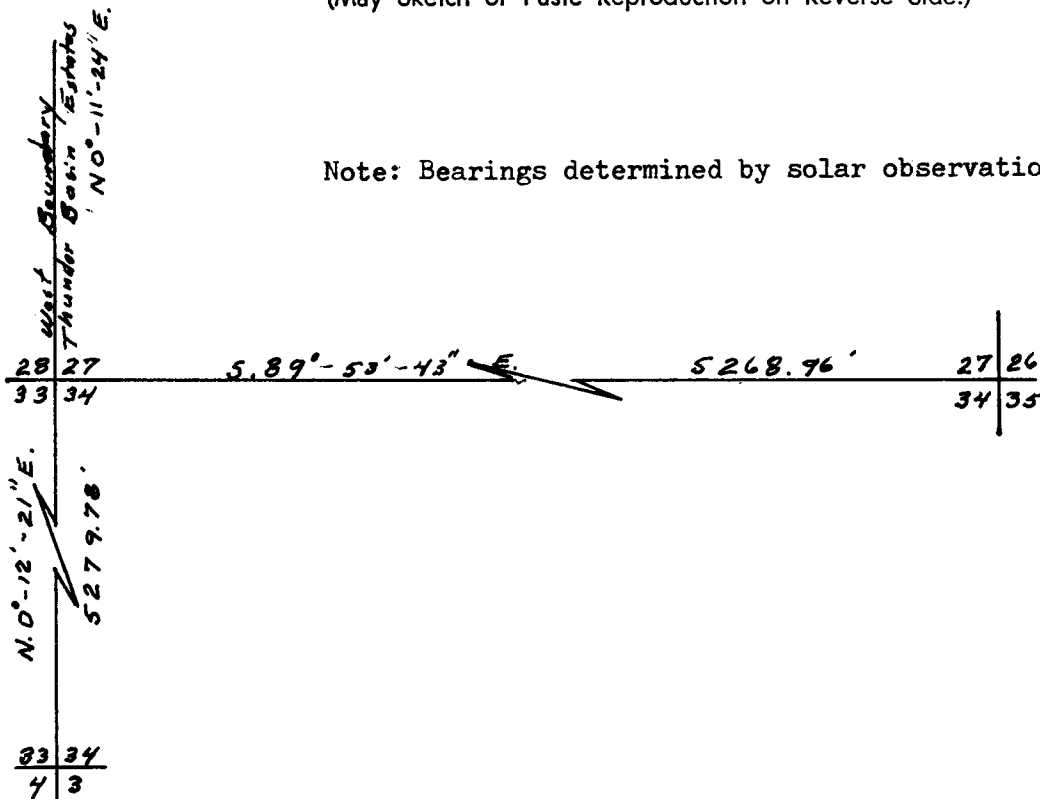
LOCATION 28 27 33 34 T.14N.,R.63W. 6th P.M.	DESCRIPTION OF CORNER EVIDENCE FOUND, AND ORIGINAL RECORD (if known) Found granite boulder 20" x 13" x 7", floating. Re-established corner by double proportion. G.L.O. record - 20" x 13" x 7" granite boulder.
---	---

DESCRIPTION OF MONUMENT AND ACCESSORIES ESTABLISHED TO PERPETUATE THE ORIGINAL LOCATION OF THIS CORNER:

At the corner: Set 5/8" rebar with aluminum cap stamped 28 27 / 33 34 .

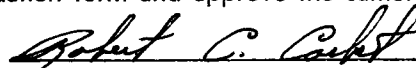
Accessories: Set 5/2 ft. steel post 1 ft. east of corner.
 Left stone as memorial.

SKETCH, WITH COURSE AND DISTANCE TO ADJACENT CORNER IF DETERMINED IN THIS SURVEY.
 (May Sketch or Paste Reproduction on Reverse Side.)



Note: Bearings determined by solar observation.

I, Robert C. Corbet certify that I have carefully performed or reviewed the work done on the diagrammed corner as reported on this recordation form and approve the same.


 Signature of Surveyor L. S. No. 495
 Registration No.

STATE OF WYOMING,
 Office of Clerk and Recorder,
 County of Saramie

This "corner record" was filed for record on the 9 day of August, 1973, was noted on the cross-index plat and is assigned page No. _____, in book No. _____.


 County Official

Cross Index No. <u>V 13</u>	T. <u>14</u>	R. <u>63</u>	<u>6</u> Mer.
_____	T. _____	R. _____	Mer.
_____	T. _____	R. _____	Mer.
_____	T. _____	R. _____	Mer.
_____	T. _____	R. _____	Mer.
_____	T. _____	R. _____	Mer.
_____	T. _____	R. _____	Mer.

Photographed

Indexed

Posted

Assessor

The State of Wyoming }
 County of Laramie } SS

This instrument was filed for record
 at 1:17 o'clock P. M. on the
9 day of August
 A. D. 1933 and duly recorded in
 Book of pages

John B. Williams
 County Clerk & Ex-Officio Register of Deeds
 Deputy